

Universal Box Installation Guide

Welcome to this guide, I'm going to explain in some easy steps how to install Universal Box on your computer. Before you do anything, please visit <http://www.universalbox.com> and sign up and download the latest executable installer from the download section.

Step 1, Run the Setup.exe installer.

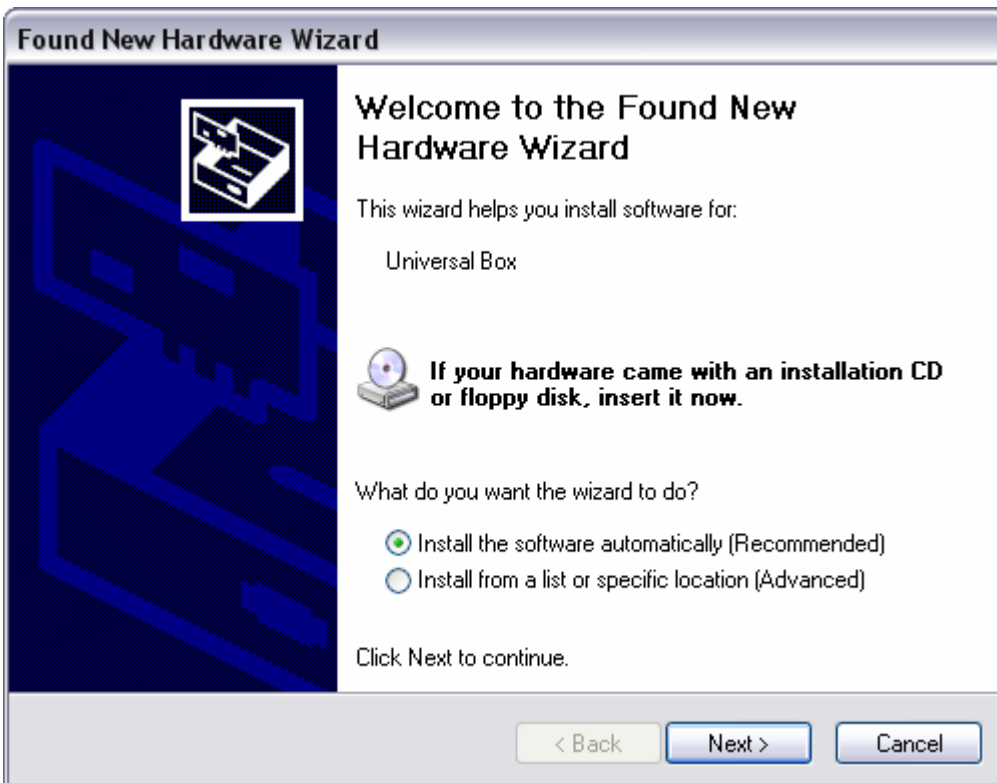
Step 2, Install the software.

Step 3, If you want to use the box with parallel port jump to step 7.

Step 4, Connect the Universal Box through USB port to your computer and the Windows will recognize your new hardware as shown below.



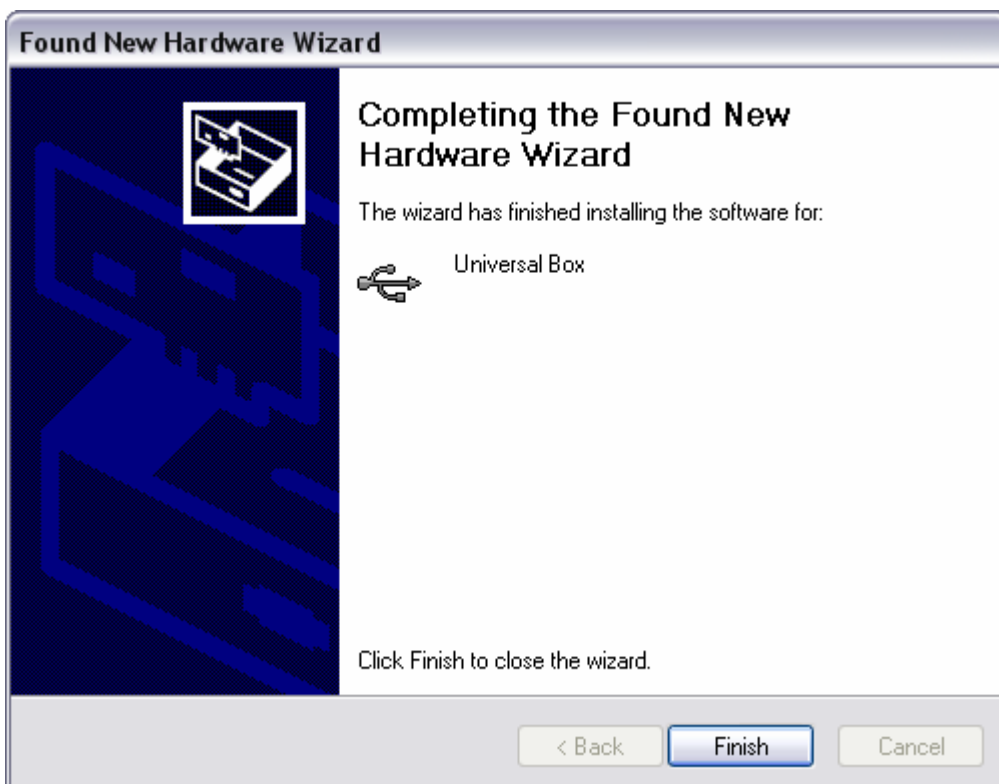
Step 5, Select the "Install the Software automatically"



Step 6, Windows will automatically find the drivers needed by the Universal Box. When you see the following dialog simply press “Continue Anyway” button.



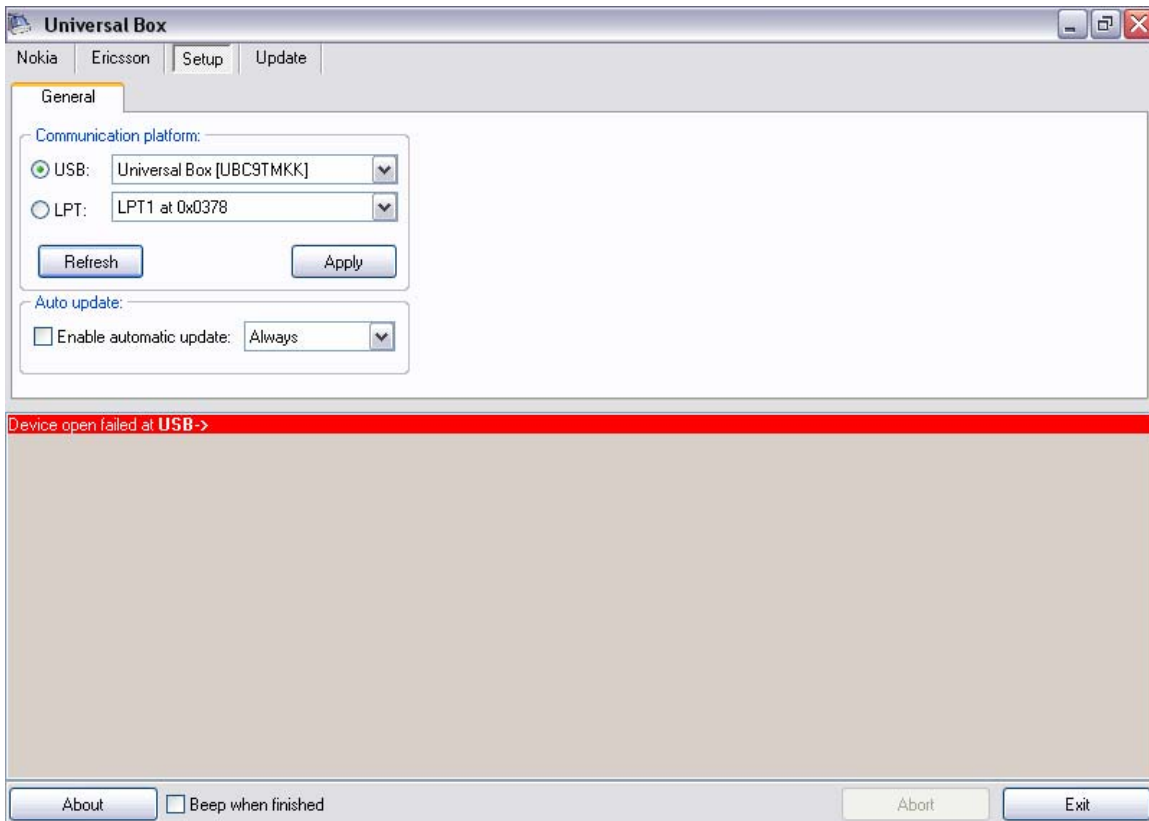
When installation success, you should see this window.



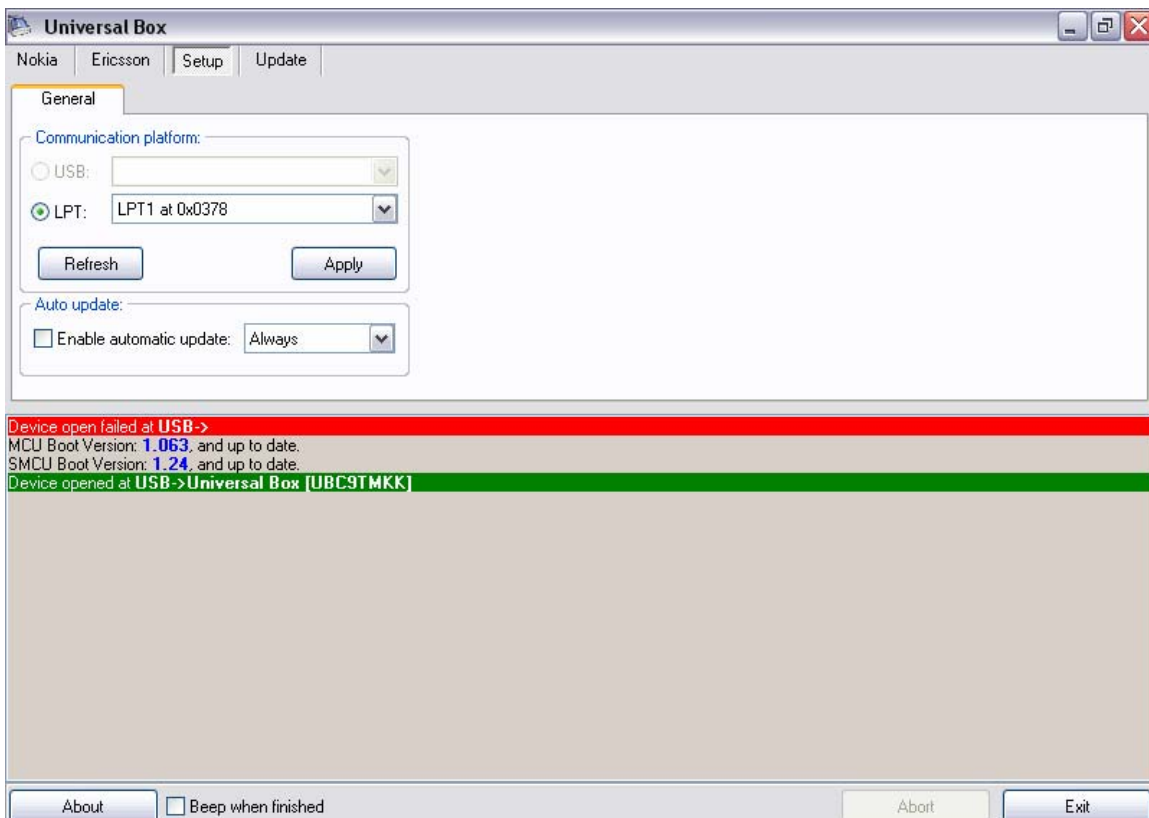
Congratulations, you have managed to use our software on your computer.

Step 7, Launch the Universal Box’s software.

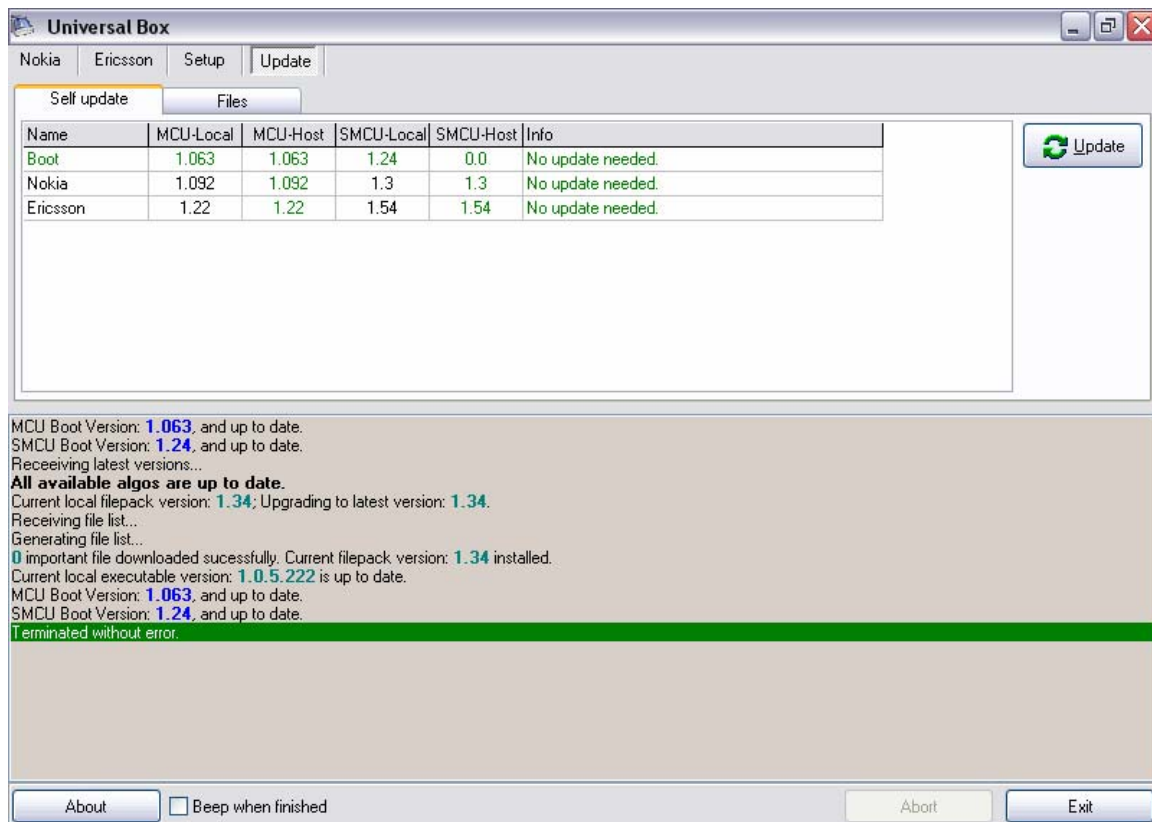
Step 8, Select "Setup" tab and press "Refresh" button.



Step 9, Select your communication interface e.g. USB and press "Apply" button.



Step 10, Select "Update" tab and "Self update" sub tab then press "Update" button. Please note that the box will connect to our remote server to download these updates!



At this point your box is up-to-date and ready to work.

Best wishes, Universal Box Team.