

Phone models

In this section you can find the list of phone models which are supported in the basic version of Multi-box. Basic version supportes a lot of models such as **Philips, Sendo, Maxon and Alcatel** (the full description of model lines is below). Basic version also includes unibox option and JTAG interface for Philips and Sendo. Update for this models is always free of charge!

Here you can also learn about the brands which will be included very soon. They can be easily activated. The list of these phone models is also included here. So enjoy the Multi-box :)



EXPERIENCE version (extra payd activations)

Phone models supported in the **experience version (extra payd)**

This are also softwares made by Multi-box TEAM, NOT included in the basic Multi-box package.

This software can be purchased separately.

You must allready have Multi-box.

If you want to activate new software - contact your reseller or us: info@multi-box.net support for models marked with **color** was added by latest version

- **Alcatel** Exxx, BE4, BE5, BF3, BF4, BG3, BF5, BH4, TH3, TH4 (**extra payd activations**)
(**E157, E158, E159, E160, E252, E256, E257, E259**, OT756, OT565, OT556, OT535, OT735, OT735i, OT320, OT715, OT525, OT526, OT331, OT332, OT310, OT311, OT510, OT512, OT30x, OT501, OT701)



BASIC version

Phone models supported in the **basic version (free software)**

support for models marked with **color** was added by latest version

- **Philips** (238/288/120/121/316/311/330/Ozeo/Xenium/9@9++/**160**/162/350/355/**362**/V100/530/535/620/625/630/636/639/650/655/659/755/760/820/822/825/826/855/859)
- **Sendo** (20x/22x/23x/**251**/30x/**325**/33x/36x/55x/57x/60x/620/880)
- **Fly** (m550)
- **Maxon** (**MX-7750/MX-7850/MX-7950/MX-7920/MX-792X/MX-7830/MX-7931/MX-7941/MX7991/MXT-788/MX-7810/MXC-90/MX-7970** 02X1/Sewon SG-1000)
- **Daewoo** (**DW 850, DW710**)
- **Amoisonic** (d8)
- **Alcatel ODM** (OH1/OH1C/OH2 - ODM Philips product)
- **Siemens** (**SF65** - ODM Philips product, Siemens ST55, ST60, CL50 - unlock via IMEI)
- **LG 3G** (LG 3G **U8100, U8110, U8120, U8130, U8138**)
- **Vitel TSM** (**TSM1, TSM3, TSM4, TSM5, TSM5m, TSM6, x7** (O2X7))
- **Panasonic** (GD35, GD52, GD67, GD90, GD92, GD92c, GD93, GD95, GD95c, GD96, **X60, X66, X400, VS2, VS3, VS6, VS7, MX6, MX7, SA6, SA7**)



Calculations Unlock codes via IMEI (new FREE addon)

- **Philips** 568
- **Panasonic** A10x
- **Panasonic** x300
- **Panasonic** GD55
- **Panasonic** G5x/G70
- **NEC** 101
- **NEC** 342i
- **Siemens** ST55
- **Siemens** ST60
- **Siemens** CL50

- **Most of phones can be supported by normal Unibox.** UniBox Universal Unlocking Box is basic device in each GSM service. Using this function you can make the following things like: flashing, unlocking, diagnostic,

repair, load any content (logo, wallpaper, tones, games and others). UniBox supports following models of phones: Alcatel, Benq, Bosch, Ericsson, LG, Mitsubishi, Motorola, Nec, Panasonic, Samsung, Sagem, Sharp, Siemens, Sony, Toshiba, VK and many others. Totally supports over 400 different models.



ALCATEL cell phones (extra payd activations)



Supported models:

- Alcatel Exxx: **E157, E158, E159, E160, E252, E256, E257, E259**
- Alcatel TH4: **OT756**
- Alcatel TH3: **OT565, OT556**
- Alcatel BH4: **OT535, OT735, OT735i**
- Alcatel XG1: **OT320**
- Alcatel BF5: **OT715**
- Alcatel BG3: **OT525, OT526, OT331, OT332**
- Alcatel BF3/4: **OT310, OT311, OT510, OT512**
- Alcatel BE4/5: **OT30x, OT501, OT701**



- Read/Write unlock/reset codes (for Exxx series)
- Read/Write lang pack (for Exxx series).
- Read/Write full flash image (for Exxx series)
- Direct unlock
- Direct unlock all FW version
- Restore lock
- Support new Thomson and Micron B2 flash chip
- Change all service settings in all BF3 and BF4 (contrast, LCD type ... complete list over 800 items)
- Support change of Phone Logos
- SAFE read and write
- Read/Write full flash
- Read/Write flash driver
- Read/Write Zi (like T9)
- Read and write language packs - latin and complex
- Write repair flash
- Upgrade or downgrade firmware of BF3 to 311 v101, v102, v103 (includes games) or to v104
- Clone any BF3 with Latin flash - to Complex flash - v101 or v102
- Clone any BF3 with Complex flash - to Latin flash - v101, v102 or v103
- Upgrade firmware of any BF4 to 10E or 10R (or downgrade)
- Clone any BF4 with Latin flash - to Complex flash OR with Complex flash - to Latin flash
- Clone any BE4/5 with Latin flash - to Complex flash
- Clone any BE4/5 with Complex flash - to Latin flash
- Repair "WARNING SOS CALLS ONLY" of BF3 and BF4
- Calculate and repair checksums of flash
- Easy change LCD Type
- Show IMEI
- Rebuild IMEI
- Show operator info
- Show lang pack info

- Inform about lang pack type - complex or latin
- Repair dead phones (for 100% working phone u need original TEH zone)
- Block read and write (any area from begin to end of flash)

Full discriptions is here: <http://www.multi-box.net/forum/viewtopic.php?p=879#879>

If you want to activate this software - contact your reseller or info@multi-box.net



PHILIPS cell phones



Supported models:

Philips: Azalis 238, 288

Philips: Fisio 120, 121, 316, 311, 330

Philips: Ozeo

Philips: Xenium, Xenium 9@9+ +

Philips: 160, 162, 350, 355, 362, 530, 535, 620, 625, 630, 636, 639, 650, 655, 659, 755, 760, 820, 822, 825, 826, 855, 859

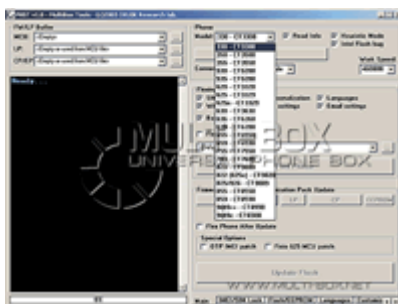
Haiera: V100



- Empty board flashing (use Bootstrap mode)
- No need to open the phone (use TAT Mode).
- Fast flashing 1 Mb
- Full SIM Locks management (Unlocking, Relocking, passwords and counters change, operator MCC-MNC change).
- Languages management (activating and deactivating of language set), detecting of phone's language set.
- IMEI change and Repair.
- Firmware and Language Pack change.
- Full Flash backup and restore.
- Restores phone after incorrect unlock and Firmware change. Completely restores all program bugs
- Program uses algorithm which doesn't depend on the firmware version that's why it is compatible with all firmware versions.
- Reading and writing of Full Flash and EEPROM
- Automatic dection of Firmware version. The latest version supports 202 phone firmware versions. Program uses heuristic method for working with unknown phone versions (It means that in 70% of cases you can unlock phone using unknown or unsupported by our program firmware version).



ALCATEL cell phones (ODM - Philips products)



Supported models:

Alcatel: OT155 (OH1)

Alcatel: OT156 (OH1C)

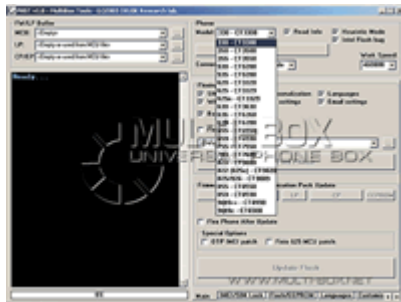
Alcatel: OT355 (OH2)



- Empty board flashing (use Bootstrap mode)
- No need to open the phone (use TAT Mode).
- Fast flashing 1 Mb
- Full SIM Locks management (Unlocking, Relocking, passwords and counters change, operator MCC-MNC change).
- Languages management (activating and deactivating of language set), detecting of phone's language set.
- IMEI change and Repair.
- Firmware and Language Pack change.
- Full Flash backup and restore.
- Restores phone after incorrect unlock and Firmware change. Completely restores all program bugs
- Program uses algorithm which doesn't depend on the firmware version that's why it is compatible with all firmware versions.
- Reading and writing of Full Flash and EEPROM
- Automatic detection of Firmware version. The latest version supports 202 phone firmware versions. Program uses heuristic method for working with unknown phone versions (It means that in 70% of cases you can unlock phone using unknown or unsupported by our program firmware version).



SENDO cell phones



Supported models:

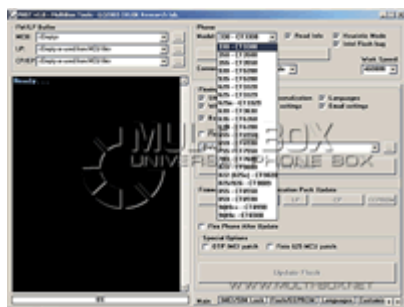
- Sendo SND200: S200
- Sendo SND220: S220, P200
- Sendo SND230: J530, P200, S200, P220, S230
- Sendo SND251: S251
- Sendo SND300: S300
- Sendo SND330: S330, **S325**
- Sendo SND360: S360
- Sendo SND550: M550
- Sendo SND570: M570
- Sendo SND600: P600, S600
- Sendo SND620: SV663
- Sendo SND880: D880
- FLY: M550**



- First in the world We are glad to present you possibility to work with Sendo phones using JTAG interface! At last you can take from you shelves phones which layed and waited till their time comes. Here it came! We are only and the first to implement restoring of dead (with erased boot) Sedno phones through JTAG, which is built-in in our Mlti-box. The given possibility will let you restore each Sendo phone with erased boot without any problems and also let you unlock the certain model line, for example Sendo S251 which for the moment was not realized by anybody
- Full SIM Locks management (Unlock, Relock, passwords and counters change, operator MCC-MNC and IMSI range change). Everything can be done in a few seconds.
- Repairs permanently blocked phones.
- IMEI change.
- Firmware and Language Pack change. And now you have possibility to upload different languages into SNDxxx models (SND200, 220, 230, 300, 325, 330, 360, 550, 570, 600, 620, 880...).
- Phone flexing. Activating vibra motor, animations menu etc.
- Restores phone after incorrect unlock and Firmware change.
- Supports all known SENDO models.



MAXON cell phones



Supported models:

Maxon MX: 7750, 7850, 7950, 7920, 792X, 7830, 7931, 7941, 7810, 7970, 7991

Maxon MXT: 788

Maxon MXC: 90

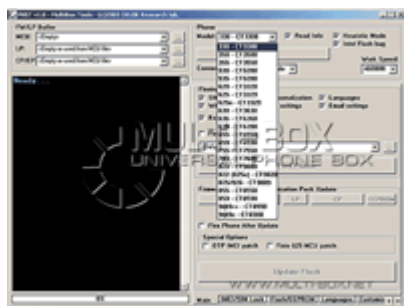
Maxon O2X1



- Read Full Flash backup.
- Full SIM Locks management (Unlocking, Relocking, passwords and counters change, operator MCC-MNC and IMSI range change). Everything can be done in a few seconds.
- Repairs permanently blocked phones.
- IMEI change.
- Firmware change.
- Flashing of empty phones.
- Restores phone after incorrect unlocking and Firmware change.
- SIM Lock, User Lock and Wrong Entry Counter reset, code calculator for old MX-32xx and MX-68xx models.



DAEWOO cell phones



Supported models:

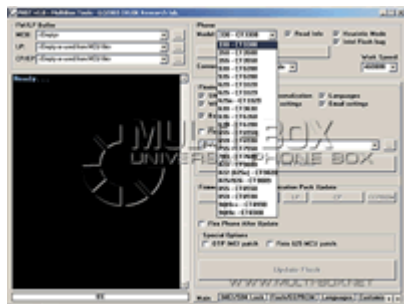
Daewoo: DW 850, DW710



- Read Full Flash backup.
- Full SIM Locks management (Unlocking, Relocking, passwords and counters change, operator MCC-MNC and IMSI range change). Everything can be done in a few seconds.
- Repairs permanently blocked phones.
- IMEI change.
- Firmware change.
- Flashing of empty phones.
- Restores phone after incorrect unlocking and Firmware change.
- SIM Lock, User Lock and Wrong Entry Counter reset.



AMOISONIC cell phones



Supported models:

Amoisonic: D8

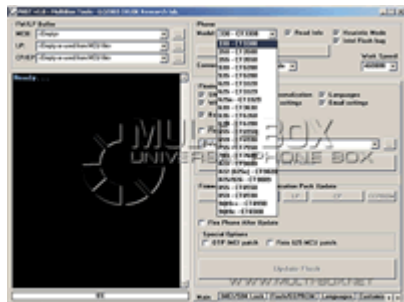


- Read Full Flash backup.
- Full SIM Locks management (Unlocking, Relocking, passwords and counters change,

- operator MCC-MNC and IMSI range change). Everything can be done in a few seconds.
- Repairs permanently blocked phones.
- IMEI change.
- Firmware change.
- Flashing of empty phones.
- Restores phone after incorrect unlocking and Firmware change.
- SIM Lock, User Lock and Wrong Entry Counter reset.



SIEMENS cell phones (ODM - philips products)



Supported models:

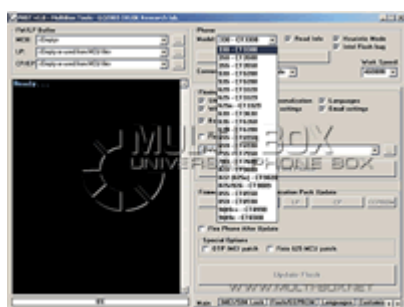
- Siemens: SF65 (ODM - Philips products)
- Siemens: ST55 - calc unlock codes via IMEI
- Siemens: ST60 - calc unlock codes via IMEI
- Siemens: CL50 - calc unlock codes via IMEI



- Empty board flashing (use Bootstrap mode)
- No need to open the phone (use TAT Mode).
- Fast flashing 1 Mb
- Full SIM Locks management (Unlocking, Relocking, passwords and counters change, operator MCC-MNC change).
- Languages management (activating and deactivating of language set), detecting of phone's language set.
- IMEI change and Repair.
- Firmware and Language Pack change.
- Full Flash backup and restore.
- Restores phone after incorrect unlock and Firmware change. Completely restores all program bugs
- Program uses algorithm which doesn't depend on the firmware version that's why it is compatible with all firmware versions.
- Reading and writing of Full Flash and EEPROM
- Automatic dection of Firmware version. The latest version supports 202 phone firmware versions. Program uses heuristic method for working with unknown phone versions (It means that in 70% of cases you can unlock phone using unknown or unsupported by our program firmware version).



LG 3G phones



Supported models:

- LG 3G: U8100, U8110, U8120, U8130, U8138



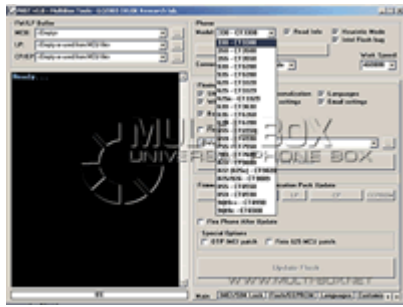
- direct unlock
- relcock to any operator
- repair locks



VITEL TSM phones

Supported models:

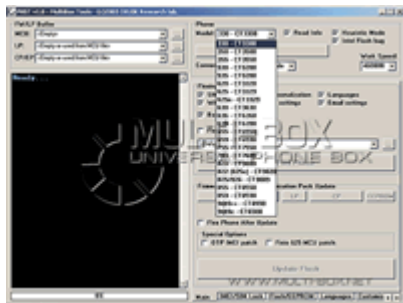
- VITEL TSM: 1, 3, 4, 5, 5m, 6, x7 (O2X7)



- Read/Write Full Flash backup.
- Firmware change.
- Restores phone after incorrect unlocking and Firmware change.
- Calculating codes via IMEI
- Reading codes (TSM 6, TSMx7 (O2X7))
- Eeprom / MCU flashing



Panasonic phones



Supported models:

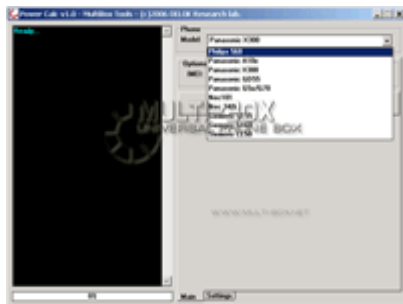
- Panasonic: GD35, GD52, GD67, GD90, GD92, GD92c, GD93, GD95, GD95c, GD96
- Panasonic: A10x - calc unlock codes via IMEI
- Panasonic: x300 - calc unlock codes via IMEI
- Panasonic: GD55 - calc unlock codes via IMEI
- Panasonic: G5x/G70 - calc unlock codes via IMEI
- Panasonic: X60, X66, X400, VS2, VS3, VS6, VS7, MX6, MX7, SA6, SA7



- BOOT RESTORE options. We would like to present it - Wirst in the world BOX which can make boot restoring in dead Panasonic phones. Now you can restore all Panasonic GD series. (new update with new Panasonic line will comming soon...)
- Cloning Panasonic GD93
- read unlock codes, erase sec library, read full back up - on Panasonic: X60, X66, X400, VS2, VS3, VS6, VS7, MX6, MX7, SA6, SA7



POWER calculator TOOL



Supported models:

- Philips 568
- Panasonic A10x
- Panasonic x300
- Panasonic GD55
- Panasonic G5x/G70
- NEC 101
- NEC 342i
- Siemens ST55
- Siemens ST60
- Siemens CL50



- generate Unlock codes via IMEI
- generate reset codes via IMEI
- supports all version



UNIVERSAL BOX functions

Supported models:

UniBox supports unlocking, flashing, software repairing for the following phone models: Alcatel, Benq, Bosch, Ericsson, LG, Mitsubishi, Motorola, Nec, Panasonic, Samsung, Sagem, Sharp, Siemens, Sony, Toshiba, VK and many others. **Totally supports over 400 different models.**

NOTICE: We are not responsible for support of all those phones via Unibox functions. It means that you should use software which you can find for free. No any software or updates from us for all those models. We will give to all our customers access to big file server. In that server you will found more than 70 Gb of software for Unibox.

Operating mode examples for various phones:

- Nokia Phones, enables Fbus or M/C-Bus mode - depends on your software.
 - Ericsson Phones, enable Fbus mode and also the 5V flash supply to operate.
 - Motorola T191 and T205 enables Fbus mode to operate.
 - Motorola V60/66/70, enables Fbus mode and also the 5V flash supply to operate.
 - Siemens Phones, enables Fbus mode to operate.
 - Alcatel Phones, enables Fbus mode to operate.
 - Panasonic Phones, enables Fbus mode to operate.
 - Sony Phones, enables Fbus mode to operate.
- (For Z5 and CD5 sometimes it`s necessary to enable flash supply!)
- Philips Phones, enables Fbus mode to operate.
 - Bosch Phones, enables M/C-Bus mode to operate.
 - Sagem Phones, enables Fbus mode to operate.
 - Trium Phones, enables Fbus mode to operate (for phone flashing you must enable the flash supply!)
 - Samsung Phones, enables FBus mode and and also the 5V flash supply to operate.